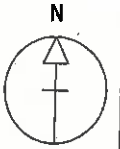




TITLE NUMBER  
**NT398382**



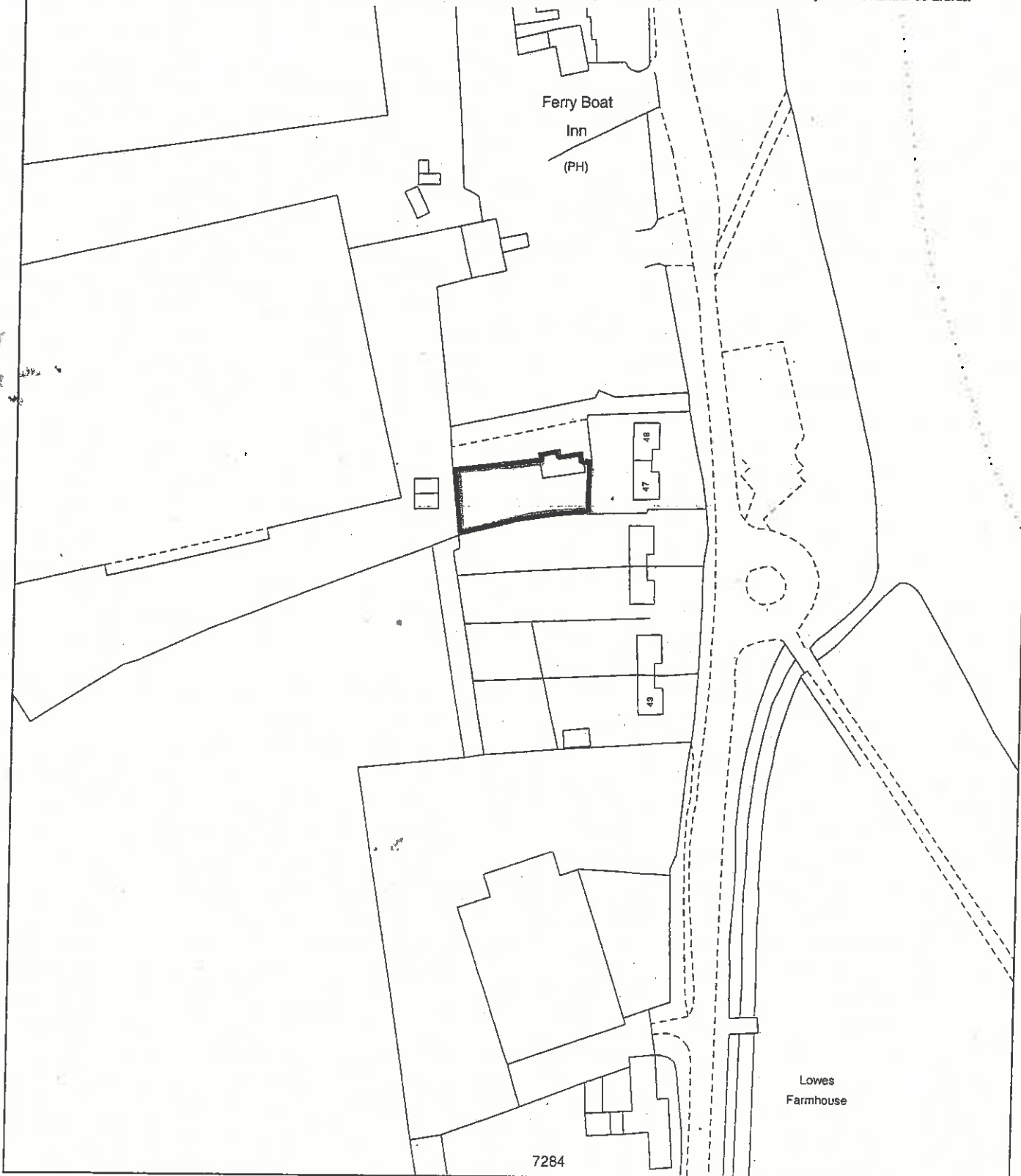
**NOTTINGHAMSHIRE : GEDLING**

ORDNANCE SURVEY MAP REFERENCE:

SK6441NE

SCALE 1:1250 Enlarged from 1/2500

©CROWN COPYRIGHT. Produced by HMLR. Further reproduction in whole or in part is prohibited without the prior written permission of Ordnance Survey. Licence Number GD 272728.



This title plan shows the general position of the boundaries: it does not show the exact line of the boundaries. Measurements scaled from this plan may not match measurements between the same points on the ground. For more information see Land Registry Public Guide 7 - Title Plans.

This official copy shows the state of the title plan on 2 August 2004 at 17:26:45. It may be subject to distortions in scale.

Under s.67 of the Land Registration Act 2002, this copy is admissible in evidence to the same extent as the original.

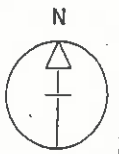
Issued on 2 August 2004.

This title is dealt with by the Nottingham (East) District Land Registry.





TITLE NUMBER  
NT398382



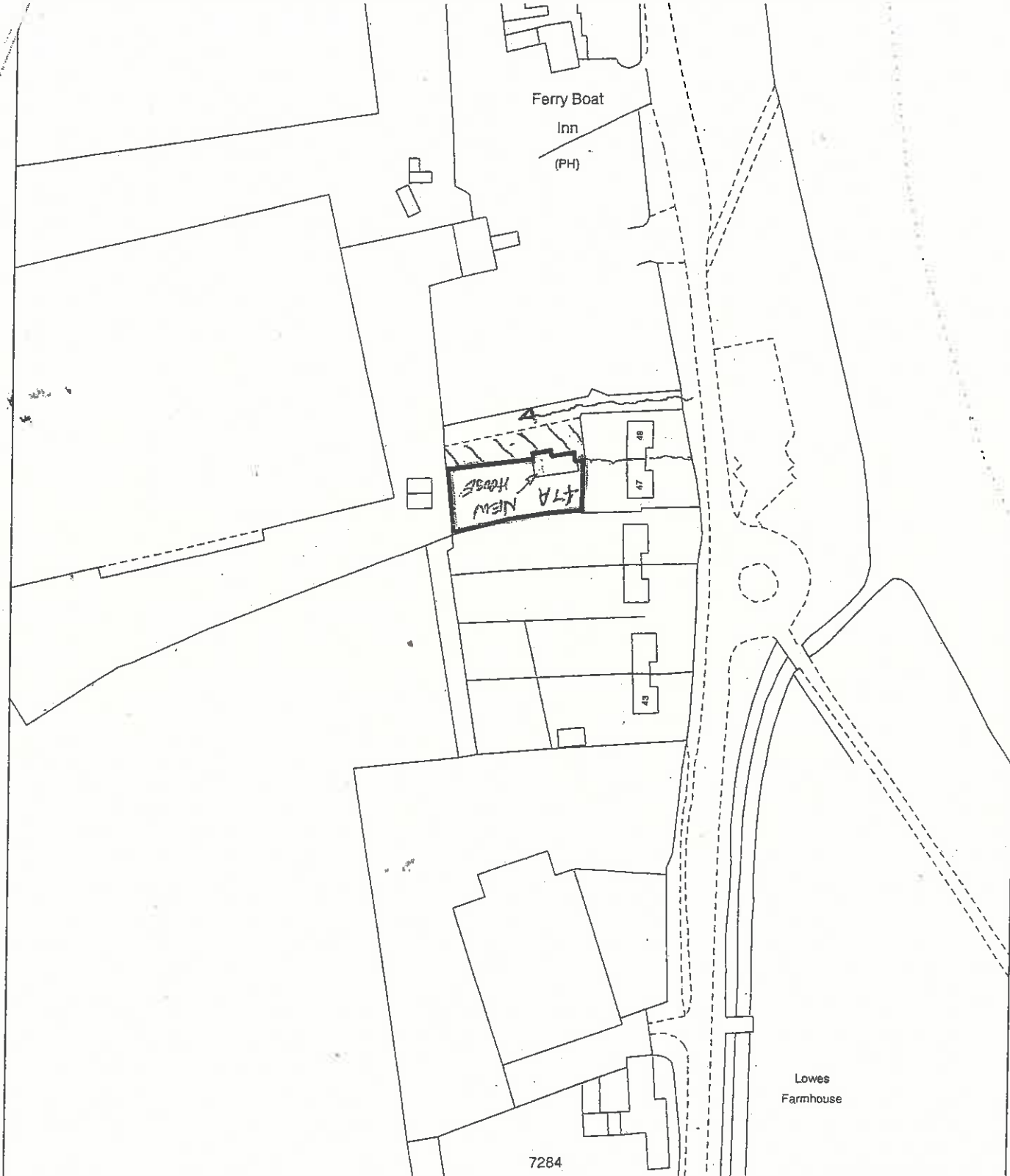
NOTTINGHAMSHIRE : GEDLING

ORDNANCE SURVEY MAP REFERENCE:

SK6441NE

SCALE 1:1250 Enlarged from 1/2500

CROWN COPYRIGHT. Produced by HMLR. Further reproduction in whole or in part is prohibited without the prior written permission of Ordnance Survey. Licence Number GD 272728.



This title plan shows the general position of the boundaries: it does not show the exact line of the boundaries. Measurements scaled from this plan may not match measurements between the same points on the ground. For more information see Land Registry Public Guide 7 - Title Plans.

This official copy shows the state of the title plan on 2 August 2004 at 17:26:45. It may be subject to distortions in scale.

Under s.67 of the Land Registration Act 2002, this copy is admissible in evidence to the same extent as the original.

Issued on 2 August 2004.

This title is dealt with by the Nottingham (East) District Land Registry.

